



MINISTERSTVO
PRO MÍSTNÍ
ROZVOJ ČR



UNECE



FAKULTA
ARCHITEKTURY
ČVUT V PRAZE

EUROPEAN SMART AND SHARING CITIES

Cities, digital technologies & online platforms in the UNECE Region

Ministry of Regional Development of the Czech Republic

Prague, 22-23 November, 2018

SESSION THREE

Urban planning and governance of a smart city
balancing economic vibrancy & public interests

Professor Brian Mark Evans
The Glasgow School of Art



“Most of the geography of Scotland consists of mountains, grass, heather and Glasgow” (after Frank Muir)



GLASGOW CITY REGION HAS A
POPULATION OF 1.8M



GVA IN 2014 WAS OVER £40
BILLION (ONS)
32% OF SCOTLAND'S GVA



CITY REGION CITY DEAL WORTH
£1.13 BILLION, LARGEST CITY
DEAL IN UK



33% OF SCOTLAND'S JOBS AND
29% OF SCOTLAND'S BUSINESSES



UK'S LARGEST RETAIL CENTRE
OUT WITH LONDON'S WEST END



GLASGOW INTERNATIONAL AIRPORT
SERVES 110 DESTINATIONS
WORLDWIDE



FASTEST GROWING ECONOMY
IN UK 2013-14 (ONS)



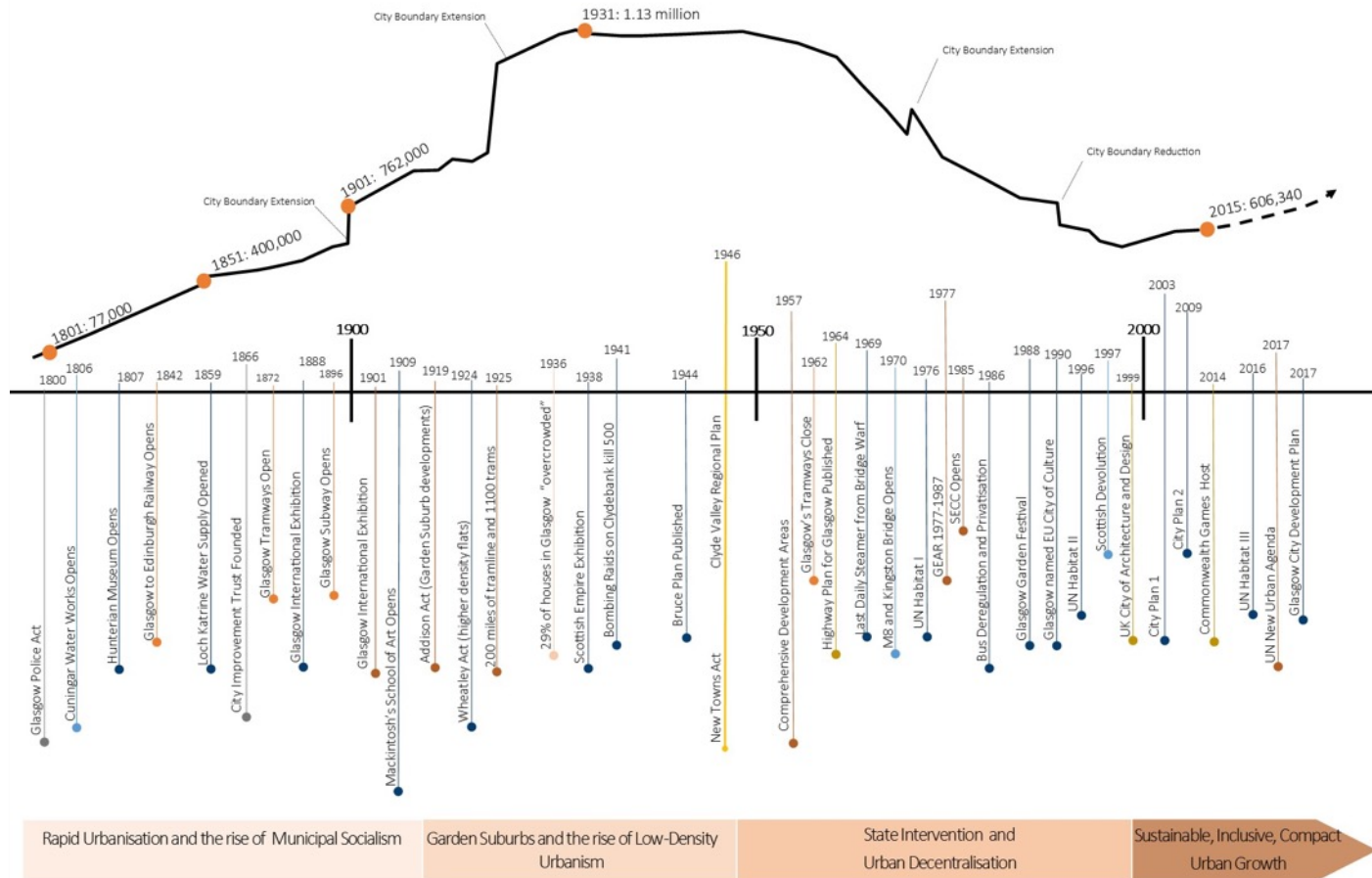
130,000+ STUDENTS FROM 135
COUNTRIES STUDY AT 8
INSTITUTIONS OF HIGHER AND
FURTHER EDUCATION

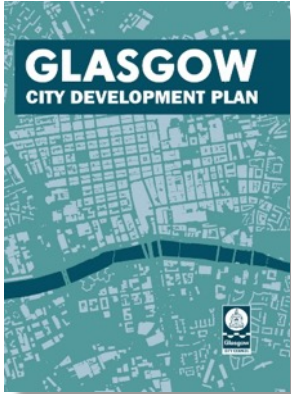


GLASGOW LARGEST
CITY
SCOTLAND

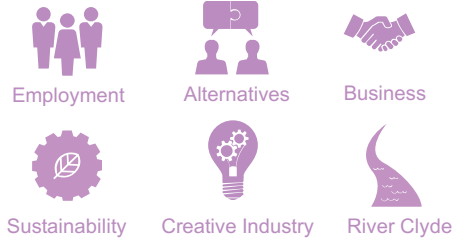
4TH IN UK

London





A vibrant place with a growing economy.



A sustainable place to live and work.



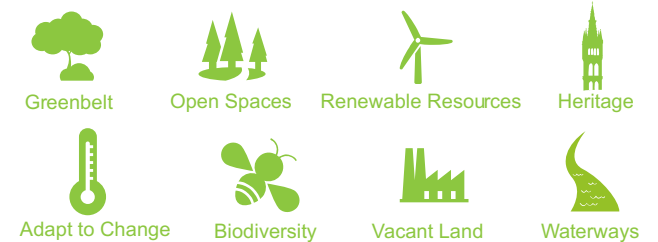
A compact city
form that
supports
sustainable
development

A healthy,
high quality
place

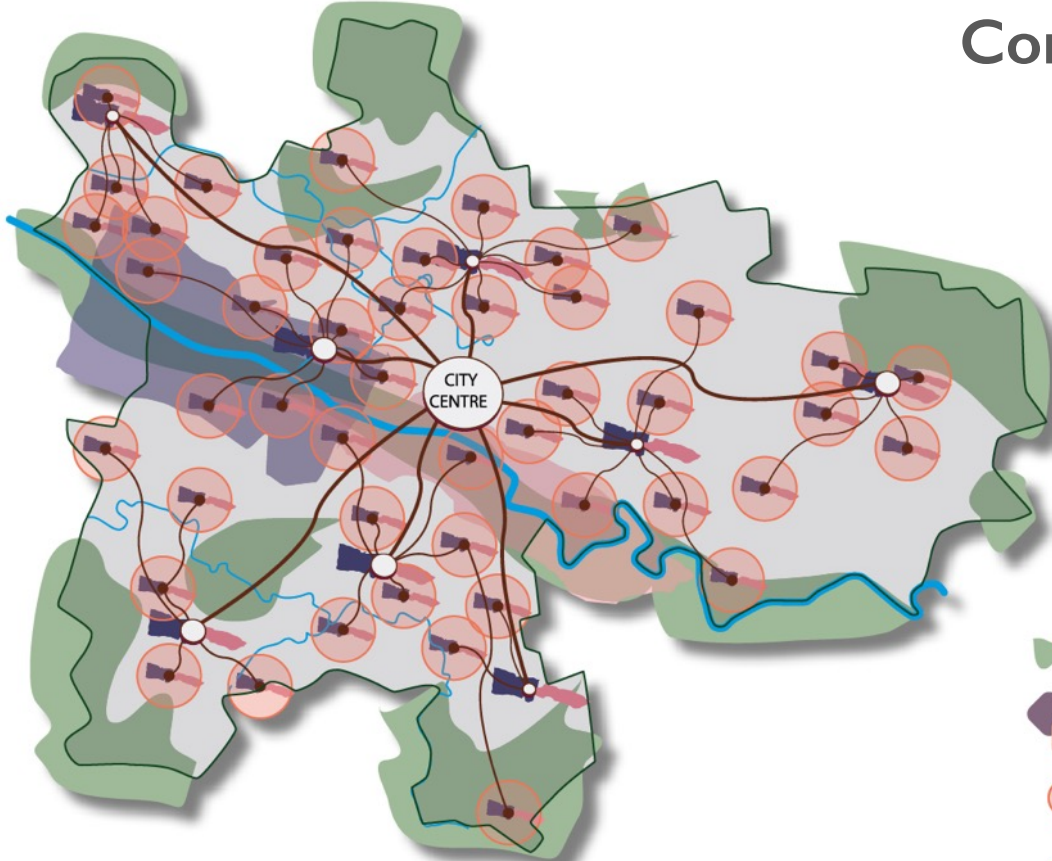
A connected place to move around and do business.



A green place Resilient, accessible and attractive.



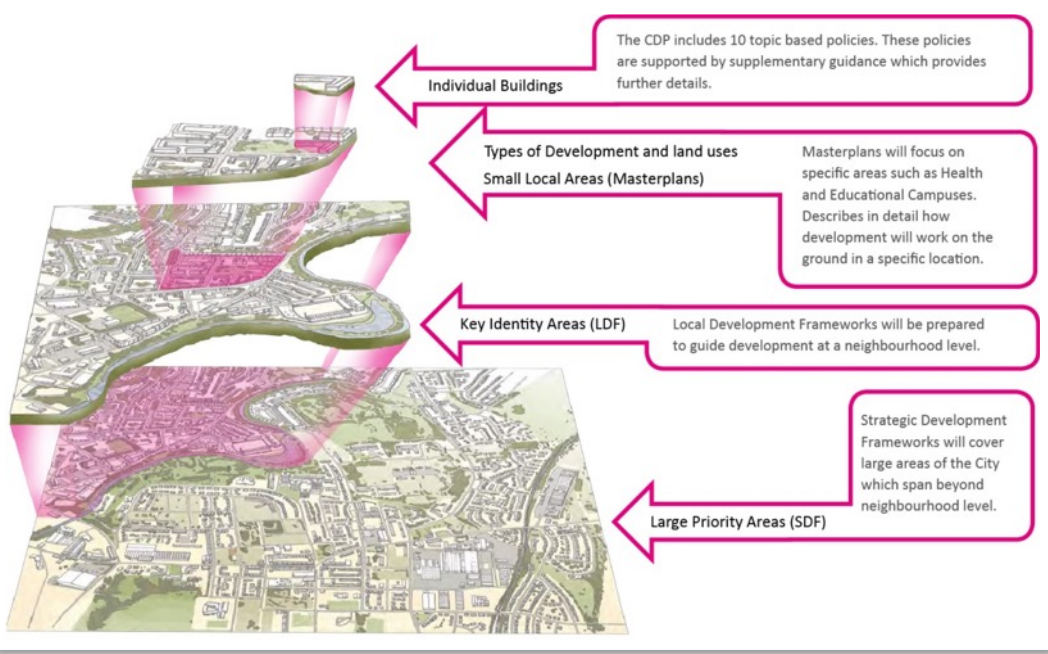
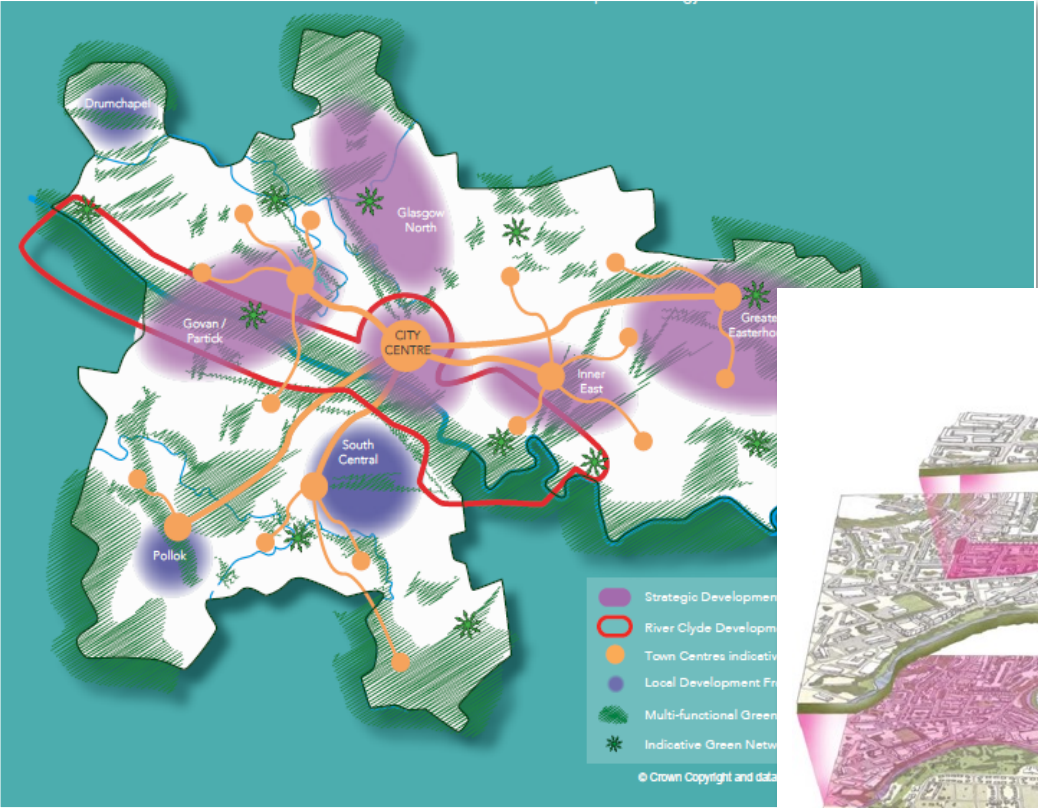
Compact City Form



-  A Green City
-  A vibrant City and growing economy
-  A Connected City
-  A thriving network of neighbourhoods

© Crown Copyright and database right 2016. OS Licence No. 100023379.

Spatial Guidance



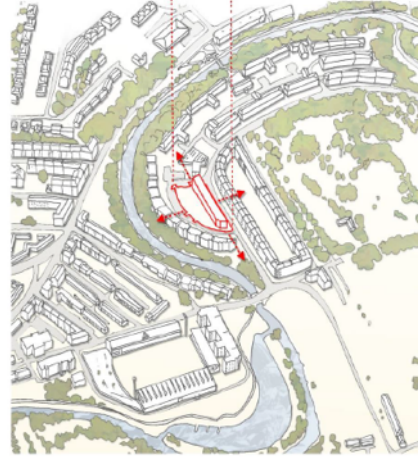
Placemaking and Design

CITY CENTRE, THINK ABOUT...

- 1. Streetscape**
Investigate the influence of the high quality streetscape on the city centre. Consider the impact of the streetscape on the city centre. Consider the impact of the streetscape on the city centre.
- 1.2 Human Scale and Interest**
Consider the scale and interest of the city centre. Consider the scale and interest of the city centre.
- 1.3 Green Infrastructure and Controlling the Street Edge**
Consider the impact of green infrastructure on the city centre. Consider the impact of green infrastructure on the city centre.
- 1.4 Mixed Use of Uses**
Consider the impact of mixed use on the city centre. Consider the impact of mixed use on the city centre.
- 1.5 A Variety of Public Experiences**
Consider the impact of a variety of public experiences on the city centre. Consider the impact of a variety of public experiences on the city centre.
- 1.6 Connectivity**
Consider the impact of connectivity on the city centre. Consider the impact of connectivity on the city centre.
- 1.7 Safety in the Public Realm**
Consider the impact of safety in the public realm on the city centre. Consider the impact of safety in the public realm on the city centre.
- 1.8 Vibrant Lanes & Back Streets**
Consider the impact of vibrant lanes and back streets on the city centre. Consider the impact of vibrant lanes and back streets on the city centre.

Thinking outside the red line boundary

New development should not be considered in isolation. Full consideration should be given to the surrounding environment.



HISTORIC ENVIRONMENT, THINK ABOUT...

- 1. Transparency**
Consider the impact of transparency on the historic environment. Consider the impact of transparency on the historic environment.
- 2. Facade Treatment**
Consider the impact of facade treatment on the historic environment. Consider the impact of facade treatment on the historic environment.
- 3. Proportions**
Consider the impact of proportions on the historic environment. Consider the impact of proportions on the historic environment.
- 4. Safety and Views**
Consider the impact of safety and views on the historic environment. Consider the impact of safety and views on the historic environment.
- 5. Preserving and Enhancing the Historic Open Space Network**
Consider the impact of preserving and enhancing the historic open space network on the historic environment. Consider the impact of preserving and enhancing the historic open space network on the historic environment.
- 6. Public Realm**
Consider the impact of the public realm on the historic environment. Consider the impact of the public realm on the historic environment.

SMALL SCALE VACANT & DERELICT LAND, THINK ABOUT...

- 1. Activation of Blank Spaces**
Consider the impact of activation of blank spaces on the small scale vacant and derelict land. Consider the impact of activation of blank spaces on the small scale vacant and derelict land.
- 2. Healthier and Better Character**
Consider the impact of healthier and better character on the small scale vacant and derelict land. Consider the impact of healthier and better character on the small scale vacant and derelict land.
- 3. Integrated Networks**
Consider the impact of integrated networks on the small scale vacant and derelict land. Consider the impact of integrated networks on the small scale vacant and derelict land.
- 4. Temporary Community in Provision**
Consider the impact of temporary community in provision on the small scale vacant and derelict land. Consider the impact of temporary community in provision on the small scale vacant and derelict land.
- 5. Safety**
Consider the impact of safety on the small scale vacant and derelict land. Consider the impact of safety on the small scale vacant and derelict land.
- 6. Embedded Future Urban Fabric**
Consider the impact of embedded future urban fabric on the small scale vacant and derelict land. Consider the impact of embedded future urban fabric on the small scale vacant and derelict land.
- 7. The Investment of the Local Community**
Consider the impact of the investment of the local community on the small scale vacant and derelict land. Consider the impact of the investment of the local community on the small scale vacant and derelict land.
- 8. Supporting Urban Form Experiences**
Consider the impact of supporting urban form experiences on the small scale vacant and derelict land. Consider the impact of supporting urban form experiences on the small scale vacant and derelict land.

THINK ABOUT...

- 1. Safety**
Consider the impact of safety on the historic environment. Consider the impact of safety on the historic environment.
- 2. Enhancing Historic Character**
Consider the impact of enhancing historic character on the historic environment. Consider the impact of enhancing historic character on the historic environment.
- 3. Human Scale and Interest**
Consider the impact of human scale and interest on the historic environment. Consider the impact of human scale and interest on the historic environment.
- 4. Reinforce the Street**
Consider the impact of reinforcing the street on the historic environment. Consider the impact of reinforcing the street on the historic environment.
- 5. An Enhanced Pedestrian and Cycle Experience**
Consider the impact of an enhanced pedestrian and cycle experience on the historic environment. Consider the impact of an enhanced pedestrian and cycle experience on the historic environment.
- 6. Supporting Open and Public Spaces**
Consider the impact of supporting open and public spaces on the historic environment. Consider the impact of supporting open and public spaces on the historic environment.
- 7. Improved Connectivity**
Consider the impact of improved connectivity on the historic environment. Consider the impact of improved connectivity on the historic environment.
- 8. Activate the Floor**
Consider the impact of activating the floor on the historic environment. Consider the impact of activating the floor on the historic environment.



URBAN AGENDA FOR THE EU

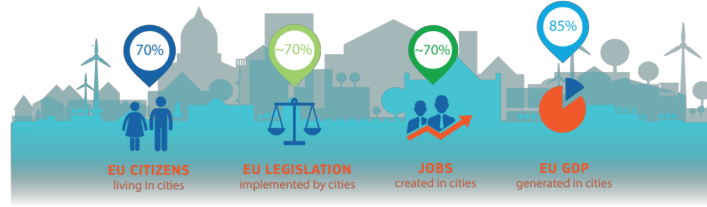
WORKING TOGETHER FOR BETTER CITIES

OBJECTIVES



12 PRIORITY THEMES

- INCLUSION OF MIGRANTS & REFUGEES
- AIR QUALITY
- HOUSING
- URBAN POVERTY
- CLIMATE ADAPTATION
- ENERGY TRANSITION
- DIGITAL TRANSITION
- URBAN MOBILITY
- CIRCULAR ECONOMY
- JOBS & SKILLS IN LOCAL ECONOMY
- PUBLIC PROCUREMENT
- SUSTAINABLE USE OF LAND AND NATURE-BASED SOLUTIONS



KEY PRINCIPLES

- Multi-level governance
- Partnership working method
- Integrated approach
- Sustainable urban development
- United Nations goals
- Functional urban areas
- Urban-rural linkages
- Cities of all sizes

“MOST EU POLICIES HAVE AN URBAN DIMENSION. LET’S WORK WITH CITIES!”

Corina Crețu
European Commissioner for Regional Policy

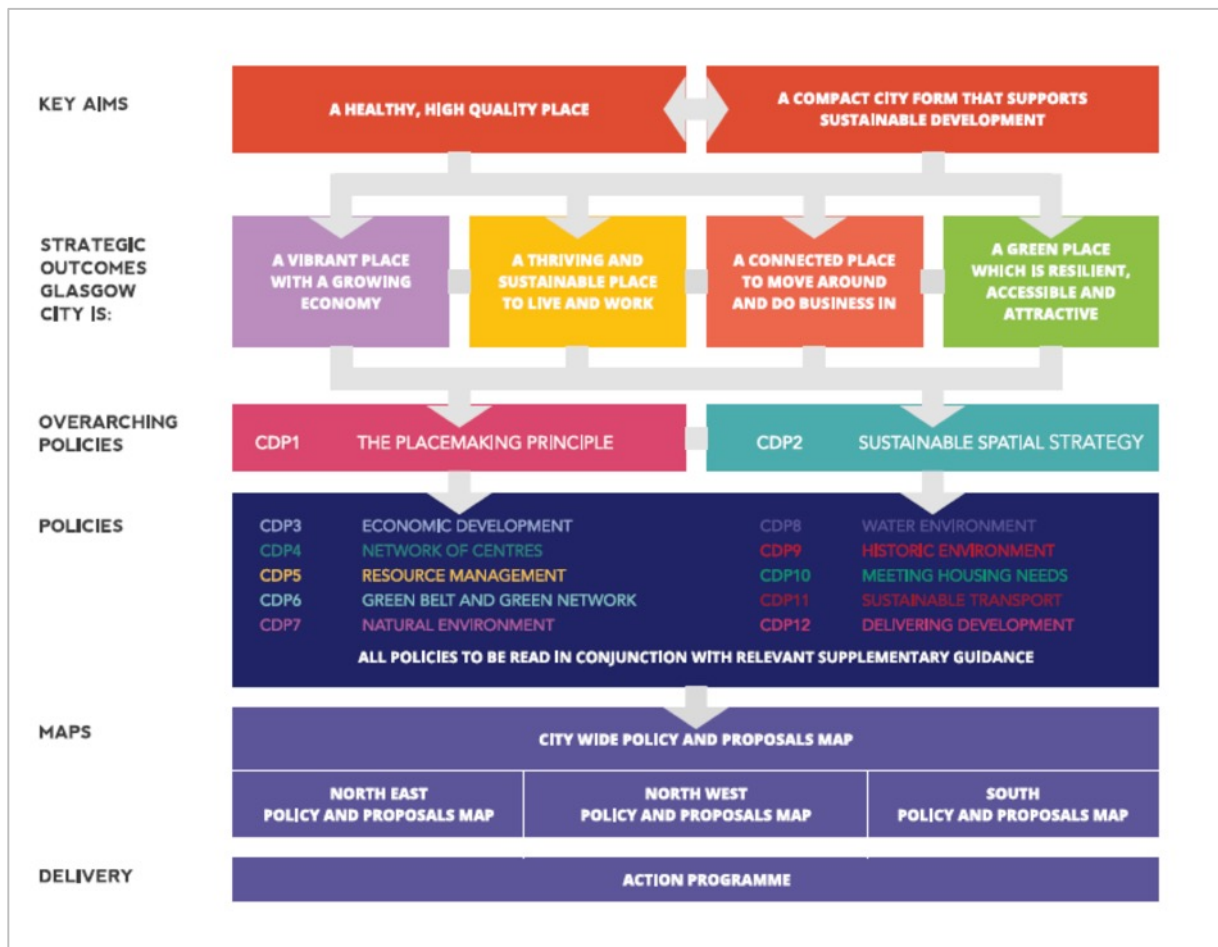
TIMELINE



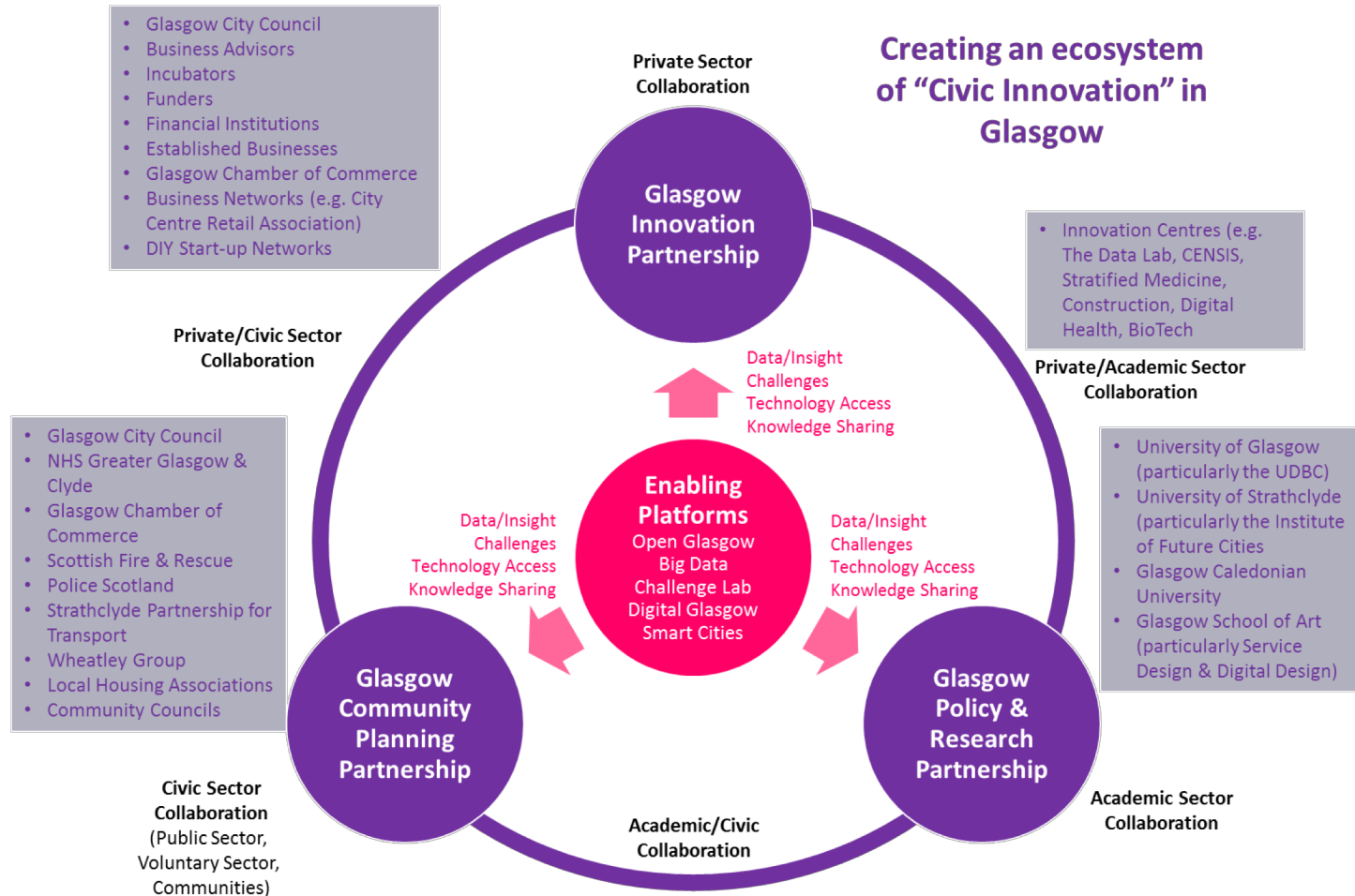
Regional and Urban Policy

#EUUrbanAgenda @EU_Regional EUinmyRegion <http://europa.eu/nc84R>





Creating an ecosystem of “Civic Innovation” in Glasgow





1 WHAT IS THE GENEVA UN CHARTER ON SUSTAINABLE HOUSING?

- The Geneva UN Charter on Sustainable Housing is a non-legally binding document that supports member States as they seek to ensure access to decent, adequate and affordable and healthy housing for all, with due attention to reducing the impact of the housing sector on the environment.
- The Charter was developed and endorsed by representatives of 56 member States of the United Nations Economic Commission for Europe (UNECE).
- The Charter is based on four principles: environmental protection; economic effectiveness; social inclusion and participation and cultural adequacy.



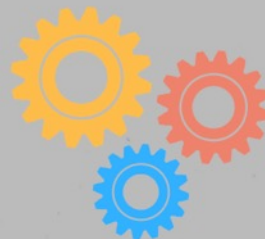
2 WHAT ARE THE CHARTER CENTRES?

- The Centres are established as a network, under the coordination of the UNECE, to allow for the exchange of experience and best practices to implement the Geneva UN Charter on Sustainable Housing.
- The Centres promote cooperation and knowledge sharing within the network.



3 WHAT DO THE CENTRES DO?

- The Centres provide the following:
- Advisory services;
 - Research services;
 - Training and workshops;
 - Provision of information on the Charter through publications, mass media, and events;
 - Capacity building at international, national and local levels;
 - Networking with cities, regions, homeowner associations and other relevant stakeholders;
 - International network with other governments and international experts;
 - Research on the implementation of the Charter;
 - Best practices for Charter implementation;
 - Support with implementation of the Charter's principles.



4 HOW DO THE CENTRES OPERATE?

- To establish the Centres UNECE partners with governments of the participating States, international, national and non-government organizations and academic institutions.
- Cooperation with the Centres is based on a Memorandum of Understanding between the UNECE and the partner organisation in the respective country.
- The Centres report to the Committee at its annual sessions.
- The Secretariat of the Committee on Housing and Land Management acts as a facilitator and coordinator of the network of the Charter implementation activities.

*Please note that the Centres do not provide financial support

GENEVA UN CHARTER
ON SUSTAINABLE HOUSING

CHARTER
CENTRES

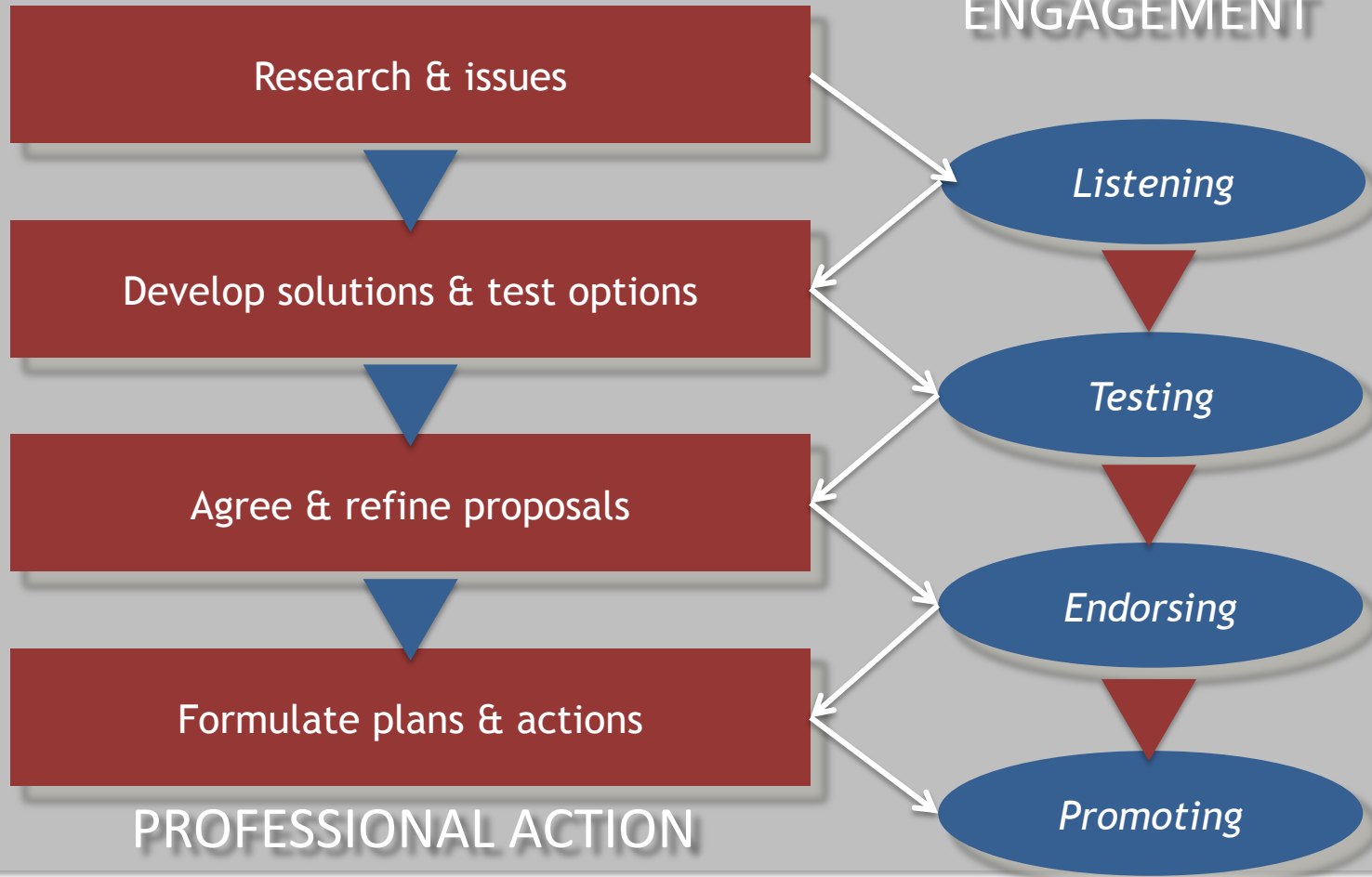


PRINCIPLES OF INTEGRATION & BALANCE

LIVING NOT HOUSING

TRANSFORMATION OF MARKET • TRANSFORMATION OF PLACE

CONVERSATION • ACROSS SCALE • ACROSS SECTOR



Geneva UN Charter Centre @ The Glasgow Urban Lab

